

BAKKE ROAD HUNTING PROPERTY

BISON, SOUTH DAKOTA | 315 ACRES | \$710,000

The Bakke Road Hunting Property in Perkins County, South Dakota, offers 315.28 acres of highly productive land, including approximately 206± tillable acres and 109 acres of grass and hay land, in an area where properties rarely come to market. Located just 4 miles north of Bison and 6 miles east on Bakke Road, the property features excellent year-round access and additional entry from both the east and west boundaries. The land includes established shelter belts, gently rolling terrain, a small southern drainage, and a centrally located rural water tap, creating an ideal balance of agricultural productivity and prime wildlife habitat. Bordering U.S. Forest Service land, it provides outstanding hunting opportunities for pheasants, sharp-tailed grouse, deer, antelope, and other game. Currently leased to a neighboring farmer for the 2026 crop year—with interest in a long-term lease—the property offers consistent income potential, making it an attractive option for investors, recreational buyers, or as an addition to an existing farming operation.

The property is conveniently located approximately 4 miles north of Bison, South Dakota, along White Butte Road, then 6 miles east on Bakke Road. It offers excellent access directly off Bakke Road, an all-weather maintained gravel road. Additional access is provided by two dirt roads along the east and west boundaries, allowing for convenient entry from multiple directions.



ACREAGE DESCRIPTION

This 315.28-acre property includes approximately 206± tillable acres and 109 acres of grass and hay land. It features four established shelter belts with cedar and a variety of other trees, enhancing both privacy and wildlife habitat. The land borders U.S. Forest Service property, adding to its appeal for recreation and hunting.

The terrain consists of gently rolling hills with a small drainage located on the southern end. A centrally located water tap, supplied by Perkins County Rural Water, provides convenient access across the property.

With a combination of shelter belts and productive farmland, this property offers exceptional hunting opportunities for Ring-necked pheasants, sharp-tailed grouse, deer, and antelope.

Historically, the land has been used for both crop and hay production, with common crops in the area including corn, wheat, oats, barley, flax, sunflowers, and hay. The current owners have leased the property for agricultural use while also utilizing it for hunting.

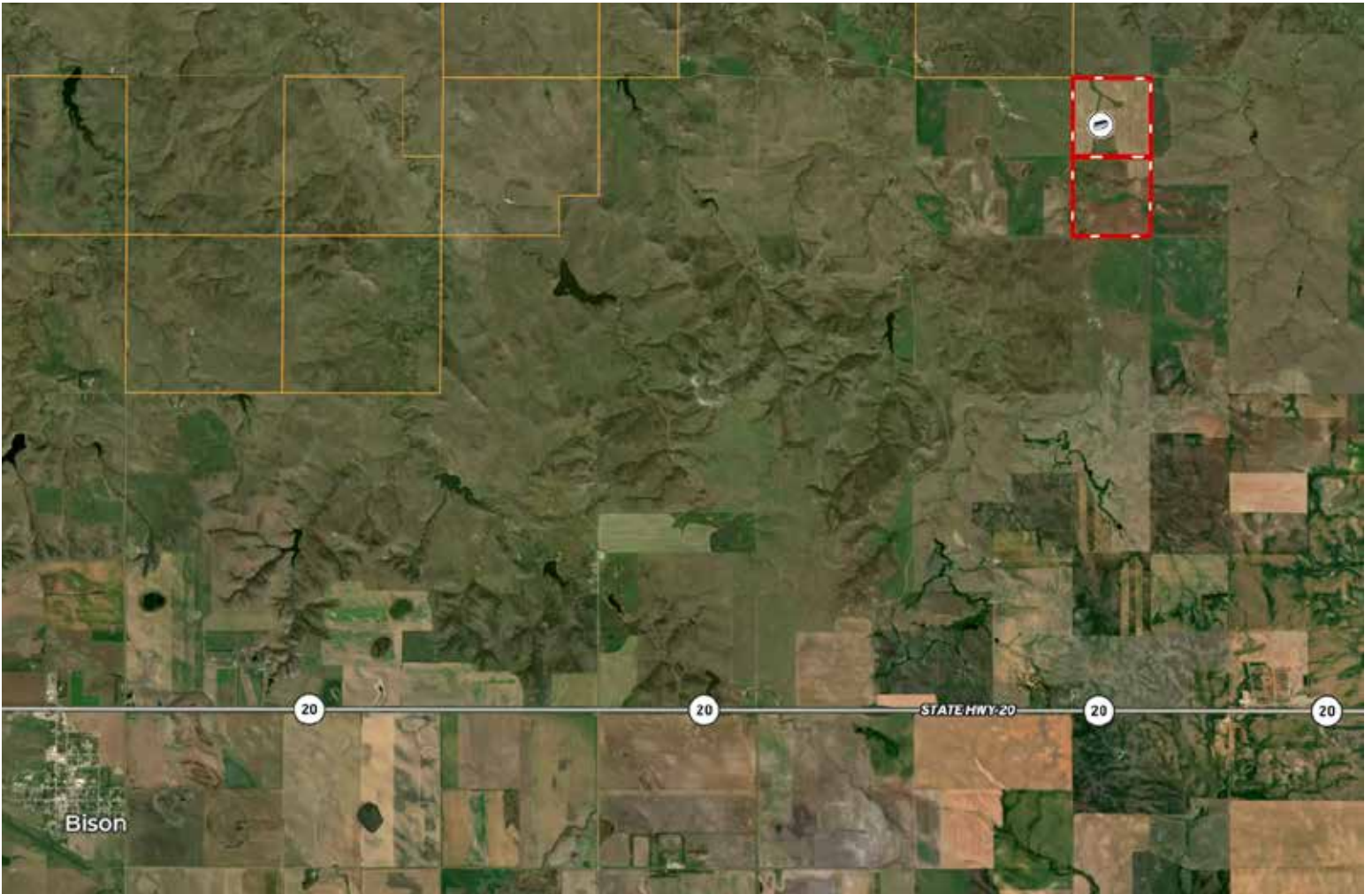
WILDLIFE

Wildlife include Ring Neck Pheasants, Sharp Tail Grouse, Deer, Antelope, Coyotes, Bobcats and Turkeys. The area is known for having good Pheasant, Grouse and Deer hunting.

There is a small drainage on the southern end of the property. There is also a water tap in the center of the property with water being supplied by Perkins County Rural Water.







WAYNE CHILDERS

605-210-0124

wayne@ranchland.com

www.ranchland.com

RANCH@COMPANY
REAL ESTATE BROKERAGE & AUCTION SERVICES

** The information contained in this brochure has been obtained from sources believed to be reliable and is believed to be correct, but the owners and brokers do not guarantee its accuracy. Offering is subject to errors, withdrawal without notice. All distances, sizes, capacities, and similar measurements and figures are approximate. All information about properties should be independently verified by interested purchasers. All rights reserved. ©*

*** A division of Mason & Morse Ranch Co., LLC.*